

A man with a beard and short hair is shown from the chest up, wearing a blue long-sleeved hoodie with a ribbed texture. He is looking over his shoulder towards the camera, with his right hand near his chin. The background is dark and out of focus.

# MASCOT®

CUSTOMIZED  
WORKWEAR

# THE WORKWEAR OF THE FUTURE IS HERE NOW

Even LIGHTER, even STRONGER,  
even more STRETCH.

MASCOT® CUSTOMIZED workwear is extremely long lasting and made from an extraordinarily high percentage of recycled materials. With many new colours, it is possible to put together a personal look.

MASCOT® CUSTOMIZED offers unique freedom of movement and new innovative features. Add pockets that match your profession and place them where you want thanks to MASCOT's unique Click Pocket System.

MASCOT® CUSTOMIZED — developed in collaboration with tradespeople!







# CLICK POCKET SYSTEM

## — AN EASY WAY TO ADD YOUR HOLSTER POCKETS

Put the pockets where you wish with our newly designed Click Pocket System. A simple click system allows you to place the pockets where you need them, and you can even add the specific number of pockets you need for a given work situation.

### Developed for your profession

If you are an electrician, painter, or work in a field where you need pockets with large compartments, then we have the solution. The MASCOT® CUSTOMIZED range includes holster pockets specifically designed for your trade or needs.



Electrician



Painter



Craftsman





# CLICK POCKET SYSTEM





# MASCOT®

CUSTOMIZED

WORKWEAR

Ultra light, very durable  
stretch

Very durable kneepad  
pockets

Easy access to tools

Easily add holster pockets

Water and dirt repellent





A man with a beard and short hair, wearing a dark blue jacket over a tan shirt and tan work pants with black knee patches, is standing outdoors. He is holding a long wooden plank diagonally across his body. In the foreground, there is a large, light-colored metal wheel. The background shows a wooden fence and a brick wall. A large white quotation mark is overlaid on the left side of the image.

“

These trousers are spot on!  
Reinforced in the right places  
and I have all the pockets I need.

*Morten, Carpenter and Test User*





“

There is so much stretch  
in these trousers.  
They feel like freedom!

*Morten, Gardener and Test User*



# 15

## COLOURS



3534 Light forest green / forest green



34 Forest green



85 Stone blue



85010 stone blue / dark navy



010 Dark navy



2289 Bordeaux / stone grey



2489 Autumn red / stone grey



54 Nut brown



5409 Nut brown / black



5689 Dark sand / stone grey



06 White



0689 White / stone grey



89 Stone grey



8909 Stone grey / black



09 Black



## Easily add holster pockets with the Click Pocket System

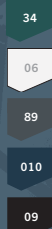
22550-012 Electrician holster pocket



22950-012 Painter holster pocket



22450-012 Craftsman holster pocket



**CLICK**  
POCKET SYSTEM

22279-605

**Trousers with kneepad pockets**  
89% recycled polyamide/  
11% elastane, 180 g/m<sup>2</sup>

Ultra-light, very durable stretch.

Extra ventilation for maximum comfort.

Extremely durable kneepad pockets.

Add your favourite holster pockets using the Click Pocket System.

Water and dirt repellent.



22079-605

**Trousers with kneepad pockets**  
89% recycled polyamide/  
11% elastane - 180 g/m<sup>2</sup>

Developed especially for painters to include a brush pocket.

Extra ventilation for maximum comfort.

Extremely durable kneepad pockets.

Add your favourite holster pockets using the Click Pocket System.

Water and dirt repellent.





#### 22379-311

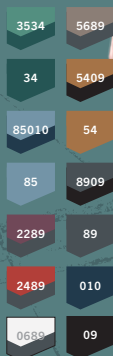
**Trousers with kneepad pockets**  
92% polyamide/8% elastane,  
235 g/m<sup>2</sup>

Lightweight, high wear resistance  
and ULTIMATE STRETCH.

Adjustable kneepad pockets in  
durable CORDURA®

Add your favourite holster  
pockets using the Click Pocket  
System.

Water and dirt repellent.



#### 22149-605 Shorts

89% recycled polyamide/  
11% elastane, 180 g/m<sup>2</sup>

Very durable, ultra-light stretch.

Add your favourite holster  
pockets using the Click Pocket  
System.

Water and dirt repellent.

Choose between two leg lengths:  
24 or 29 cm.



#### 22479-230

**Trousers with kneepad pockets**  
50% cotton/50% polyester,  
205 g/m<sup>2</sup>

**ZONE STRETCH**

Light fabric quality with high  
cotton content.

Add your favourite holster  
pockets using the Click Pocket  
System.

Adjustable kneepad pockets  
in durable CORDURA® provide  
the optimal conditions for your  
knees.



#### 22249-605

**3/4 Length trousers with  
kneepad pockets**

89% recycled polyamide/  
11% elastane, 180 g/m<sup>2</sup>

Very durable, ultra-light stretch.

Extremely durable kneepad  
pockets.

Add your favourite holster  
pockets using the Click Pocket  
System.

Water and dirt repellent.











**VERY DURABLE  
AND LIGHTWEIGHT  
TOPS, MADE FOR  
WORKING IN**



A man with a beard and short brown hair is wearing a dark green, quilted work jacket with a high collar and multiple pockets. He is holding a long, light-colored wooden handle, possibly for a shovel or spade, with both hands. The background is a blurred outdoor setting with green foliage and a path. The image is framed by a light blue border with a faint geometric pattern.

“

This workwear is  
incredibly durable  
and really comfortable  
to wear.

*Morten, Gardener and Test User*



**22001-657 Outer Shell Jacket**

100% recycled polyester,  
200 g/m<sup>2</sup>

Very durable, ultra-light stretch  
Breathable, wind and waterproof  
Tight-fitting hood with  
transparent sides  
Reflectors on the sleeves

**22102-649 Softshell Jacket, with hood**

61% recycled polyester /  
36% polyester / 3% elastane,  
305 g/m<sup>2</sup>

Windproof and water-repellent  
Tight-fitting hood that moves  
with your head

**22302-649 Softshell Jacket**

61% recycled polyester /  
36% polyester / 3% elastane,  
305 g/m<sup>2</sup>

Windproof and water-repellent

**22315-318 Thermal Jacket, CLIMASCOT®**

100% polyester, 260 g/m<sup>2</sup>

CLIMASCOT® Lightweight  
Insulation

Water and dirt repellent  
Stretch fabric at the sides  
provides extra freedom of  
movement

**22015-617 Jacket with lightweight lining**

86% recycled polyamide/  
14% elastane, 126 g/m<sup>2</sup>

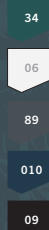
Airy and light insulation  
Ultra light and stretchy  
Breathable and windproof  
Water and dirt repellent  
Reflectors on the sleeves

**22035-657 Winter Jacket, CLIMASCOT®**

100% recycled polyester,  
200 g/m<sup>2</sup>

Very durable, ultra-light stretch  
Breathable, wind and waterproof  
CLIMASCOT® Lightweight  
insulation

Tight-fitting hood with  
transparent sides  
Reflectors on the sleeves

**22201-615 Jacket, ULTIMATE STRETCH, 50% polyamide /50% recycled polyester, 185 g/m<sup>2</sup>**

Ultra light and stretchy  
Breathable and windproof  
Water and dirt repellent  
Tight-fitting hood





A photograph of a window with a metal frame. The window is open, and the view outside shows trees with autumn foliage and a red structure, possibly a building or a piece of equipment. The sun is shining brightly through the window, creating a lens flare effect. The window frame is made of metal and has several horizontal bars. The background is slightly blurred, emphasizing the window and the view outside.

“

The trousers feel much lighter to wear. I really like that there is ventilation at the knees, behind the pockets and at the back of the trousers.

*Ea, Painter and Test User*





A full-page photograph of a man with a beard and short hair, wearing a red zip-up jacket. He is looking directly at the camera with a serious expression. His right hand is near his chest, and his left arm is crossed. The background is dark and textured. The text "MATCH YOUR STYLE" is centered in white, bold, sans-serif capital letters. On the left side of the image, there is a vertical bar with several colored squares: teal, dark green, light blue, dark blue, purple, red, and brown. On the right side, there is a vertical strip with a light blue background and a faint, abstract pattern of lines and shapes.

**MATCH YOUR STYLE**



# 10

COLOURS



34 forest green



35 light forest green



85 stone blue



010 dark navy



22 bordeaux



24 autumn red



54 nut brown



06 white



89 stone grey



09 black



**22286-608**

**Fleece hoodie**

89% recycled polyester /  
11 % elastane, 360 g/m<sup>2</sup>

Water and dirt repellent

High comfort and a great fit



**22585-608 Fleece jumper with zipper**

89% recycled polyester /  
11 % elastane, 360 g/m<sup>2</sup>

Water and dirt repellent

High comfort and a great fit



**22186-608**

**Fleece hoodie with MASCOT logo**

89% recycled polyester /  
11 % elastane, 360 g/m<sup>2</sup>

Water and dirt repellent

High comfort and a great fit



**22586-608**

**Fleece jumper with hood and zipper**

89% recycled polyester /  
11 % elastane, 360 g/m<sup>2</sup>

Water and dirt repellent

High comfort and a great fit





A close-up photograph of a dark, textured fabric, possibly a jacket or tent material, covered in numerous small, glistening water droplets. The droplets are of various sizes and are distributed across the entire surface, highlighting the water-repellent property of the material. The lighting is soft, creating a moody atmosphere. The text 'WATER-REPELLENT' is overlaid in the center in a white, bold, sans-serif font.

**WATER-REPELLENT**



A man with a beard and short hair, wearing a maroon and grey plaid button-down shirt over a dark t-shirt and grey work pants, is shown in profile. He is holding a red and black power drill in his right hand. The background is a blurred outdoor construction site with green foliage and a bright light source creating a lens flare effect. The image is framed by a dark purple border with a faint grid pattern.

“

The clothes are super comfortable to wear, and they look great, too.

*Morten, Carpenter and Test User*



**22904-446**  
**Flannel shirt**  
 60% cotton / 40% polyester,  
 270 g/m<sup>2</sup>



**22803-639**  
**Microfleece jumper with zipper**  
 100% recycled polyester,  
 220 g/m<sup>2</sup>



**22986-280 Hoodie**  
**with MASCOT logo**  
 60% cotton/40% polyester,  
 310 g/m<sup>2</sup>

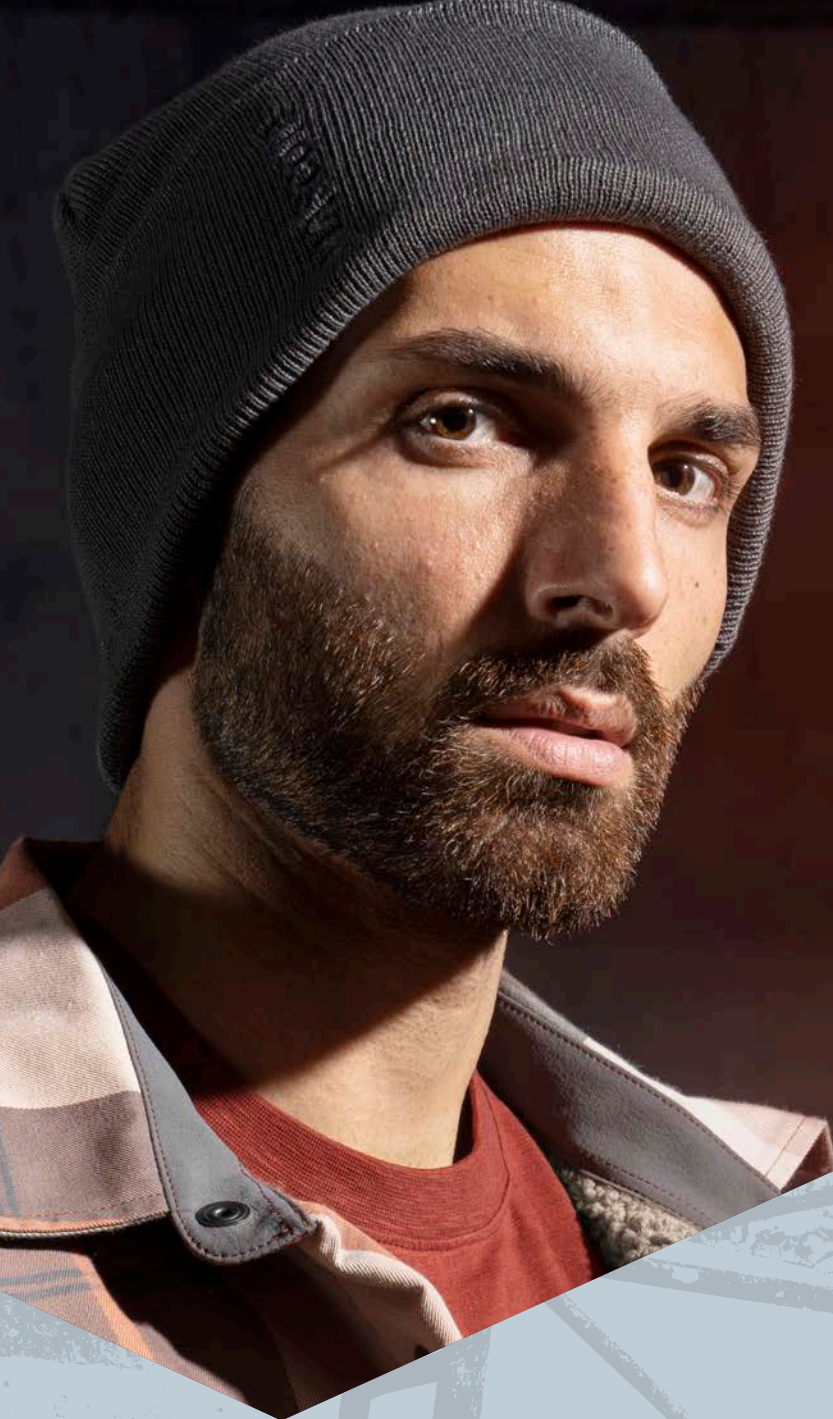


**22603-681**  
**Fleece hoodie with zipper**  
 100% recycled polyester,  
 280 g/m<sup>2</sup>



**22503-681**  
**Fleece jumper with zipper**  
 100% recycled polyester,  
 280 g/m<sup>2</sup>





# MATCHING ACCESSORIES

20650-610 Knitted hat  
MASCOT® COMPLETE  
100% recycled polyester,  
260 g/m<sup>2</sup>



22850-602 Cap, adjustable  
MASCOT® CUSTOMIZED  
92% recycled polyester/  
8% elastane, 300 g/m<sup>2</sup>





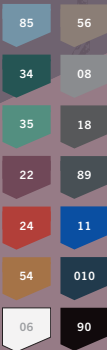
**22281-461**  
T-shirt, long-sleeved  
90% polyester /  
10% elastane,  
210 g/m<sup>2</sup>



**22282-461 T-shirt**  
90% polyester /  
10% elastane,  
210 g/m<sup>2</sup>



**20384-788 Sweatshirt,**  
modern fit  
**MASCOT® CROSSOVER**  
60% organic cotton/  
40% recycled polyester,  
310 g/m<sup>2</sup>



**22581-983 T-shirt,**  
long-sleeved  
100% organic cotton,  
175 g/m<sup>2</sup>



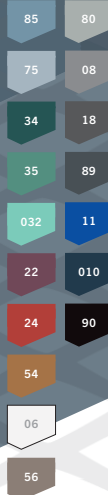
100% ORGANIC  
COTTON

**22582-983 T-shirt**  
100% organic cotton,  
175 g/m<sup>2</sup>

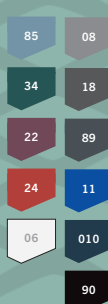


100% ORGANIC  
COTTON

**20482-786 T-shirt,**  
modern fit  
**MASCOT® CROSSOVER**  
60% organic cotton/  
40% recycled polyester,  
160 g/m<sup>2</sup>



**20492-786**  
T-shirt, ladies fit  
**MASCOT® CROSSOVER**  
60% organic cotton/  
40% recycled polyester,  
160 g/m<sup>2</sup>



# MASCOT®

## CUSTOMIZED FOOTWEAR

### F0650-704 Safety Shoe S1PL | SR | FO | ESD

Shock-absorbing insoles and midsoles of TPU which make the shoes comfortable to wear all through the working day.

Get a stable footing thanks to an extremely slip-resistant rubber outer sole.

Light and flexible shoe with a robust, textile upper that has been tested for your day-to-day as a tradesperson.

0688

09

2409

3409

5409

8509



### F0660-709 Safety Shoe S1PL | SR | FO | ESD

Excellent comfort with a unique shock-absorbing midsole made of TPU and eTPU.

Get a stable footing thanks to an extremely slip-resistant rubber outer sole.

Light and flexible shoe with a robust, textile upper that has been tested for your day-to-day as a tradesperson.

09





MIX & MATCH





Werbewert GmbH

Kahlspergweg 29  
5400 Hallein  
Österreich

[mascot@werbewert.at](mailto:mascot@werbewert.at)

T.: +43664 20 42 026

[www.werbewert.at](http://www.werbewert.at)

